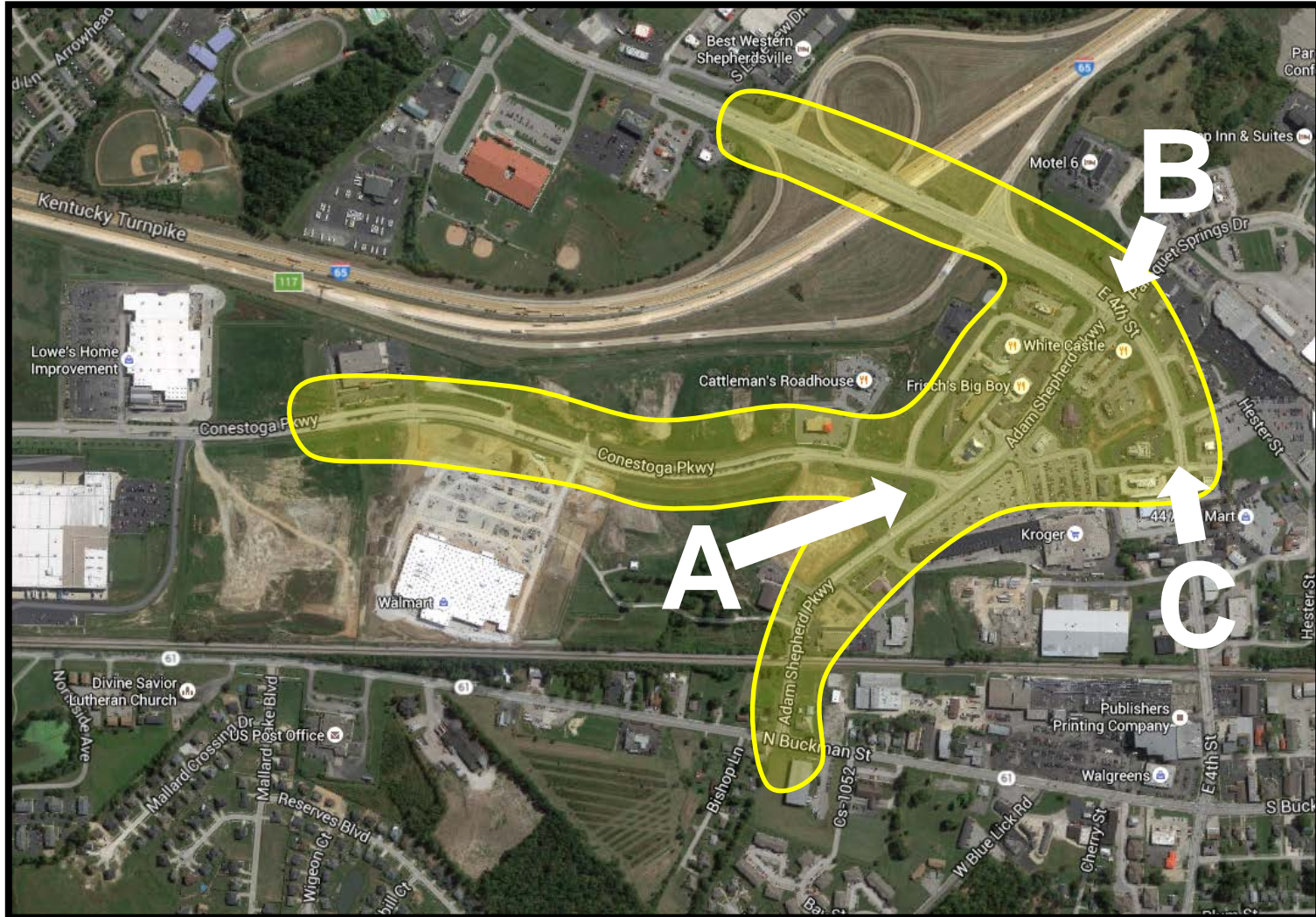




Downtown Shepherdsville Traffic Study Area

June 30,
2016
Public
Mtg.

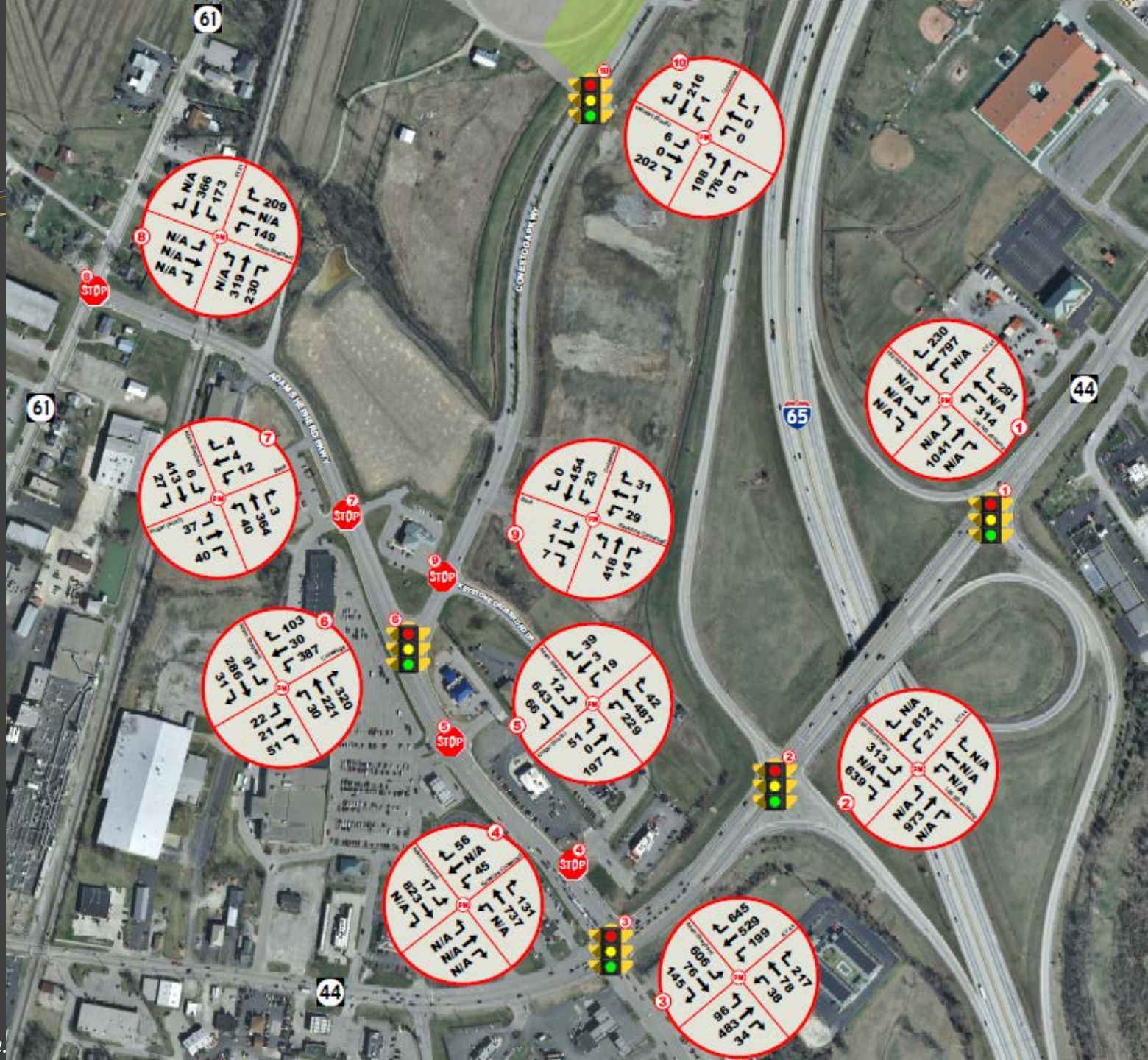




Existing PM Peak Hour Turning Movements



Groundbreaking by Design.





Leading Transportation Issues

- Backups on Adam Shepherd Pkwy from KY 44
 - Backups occurs throughout a large portion of the day and can extend back into the Conestoga signal
- Vehicular & Pedestrian Access to/from Keystone Dr
 - No Pedestrian Connections to any other nearby facility
 - Left turns from either end of Keystone Dr can be dangerous
- General Pedestrian Access
 - No connections to walmart or north/south along Conestoga
 - No signalized pedestrian crossing for Adam Shepherd Pkwy
- Access Management
 - Left turns should be prohibited in areas where not appropriate



Sidewalk Plan

— Proposed New

— Existing





Possible Improvements

- Split Phase Conestoga & Adam Shepherd signal and add dual lefts from Conestoga towards KY 44
- Access Management
- Move signal on KY 44 @ Hester St to the west to provide signalized access to and from Kroger also
- Construct a roundabout on Conestoga Pkwy to improve access out of Keystone Dr
- Realign Adam Shepherd approach to KY 44 to add room for queueing





Adam Shepherd Pkwy & Conestoga Pkwy

Option – A1

Widen to Add
Dual Lefts

Different
Traffic Signal

Easier to turn
Left from
Keystone Dr.

Ped Xing





Roundabout

Option – A2

Single roundabout
North on Conestoga

OR

Double Roundabout
at Adam Shepherd /
Conestoga / Keystone





Access Management

Option – B.1



Eliminate Left
Turns onto
Adam
Shepherd

Left Bound will
Have to go to
Conestoga





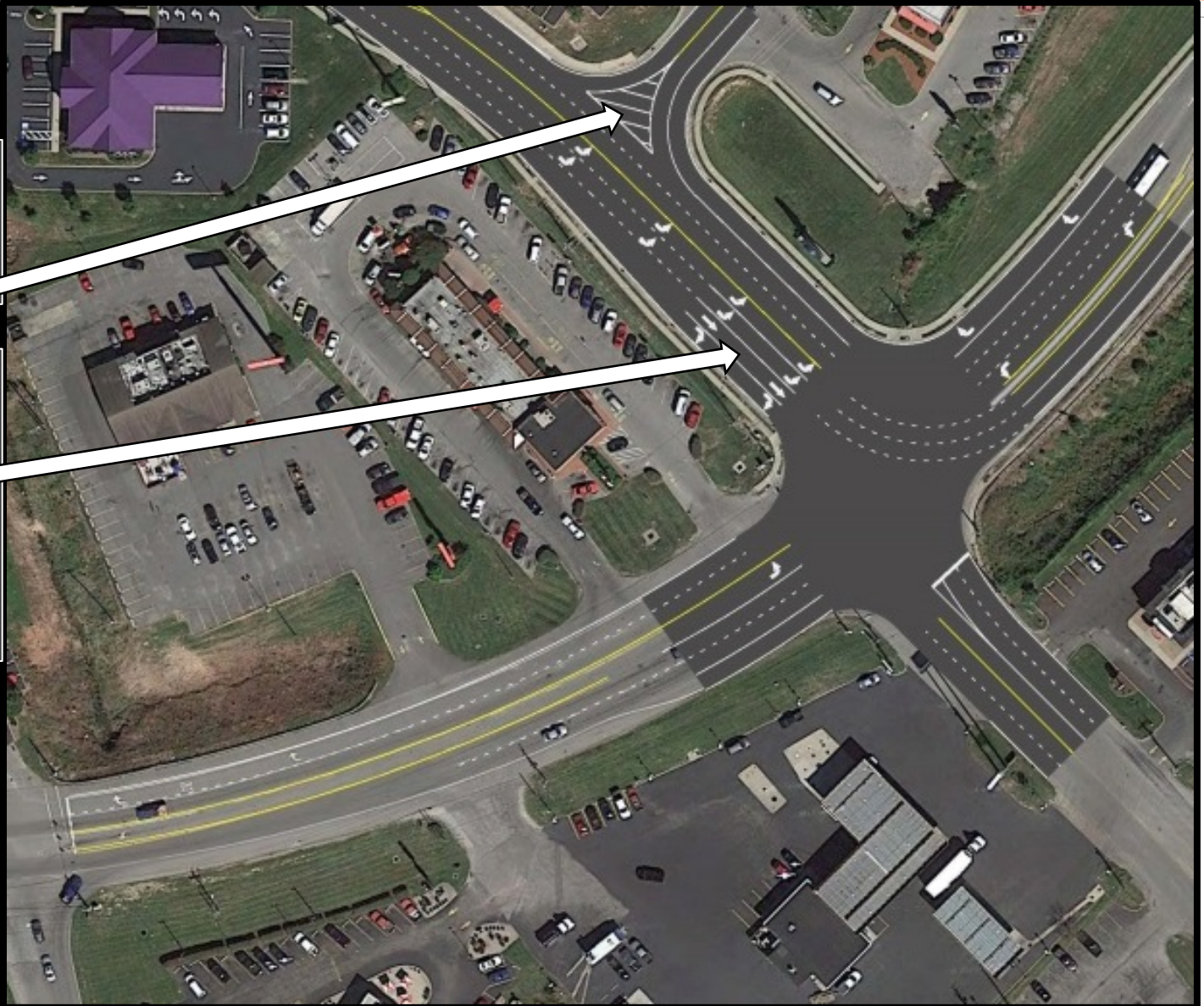
Realign Adam Shepherd Approach to KY 44

Option – B2

**RI/RO – Only to
Keystone – No
Lefts Out**

**Today: 3 lanes
Out, 4 lanes In.**

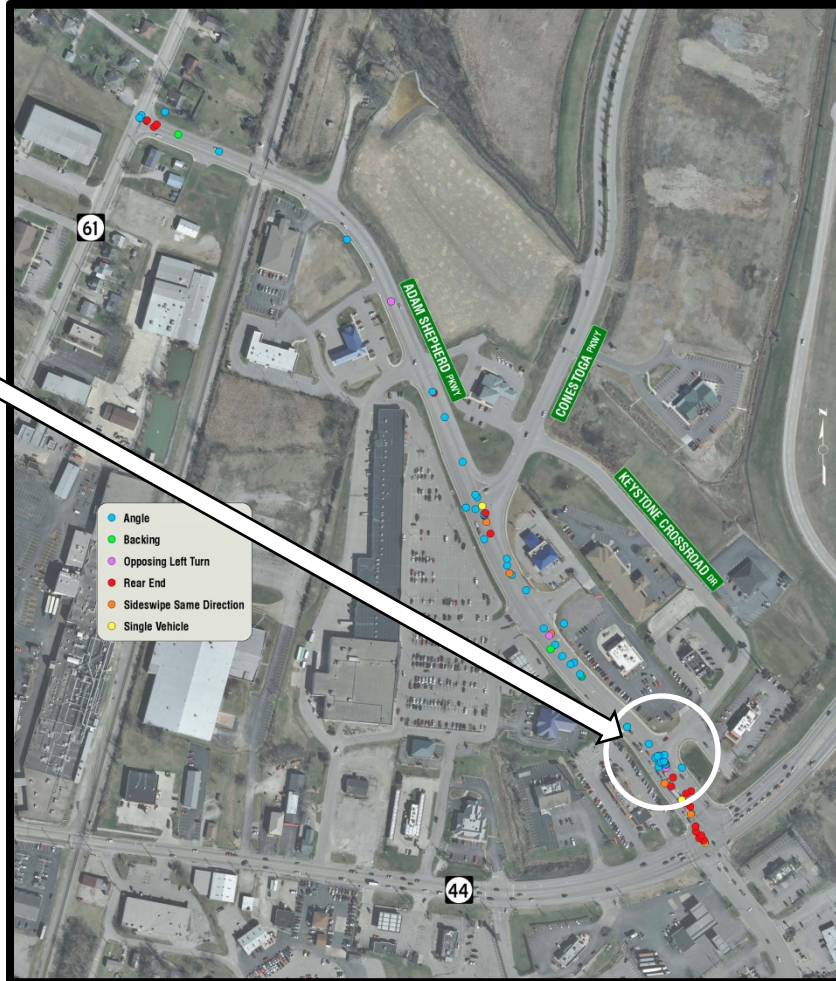
**Proposed: 4
Lanes Out, 3
Lanes In**





Area B – Crash Data to Support Eliminating “Left-Outs” from Keystone

Too Many
Angle Crashes
@ Keystone/
Adam
Shepherd
Intersection



Crash Data for Adam Shepherd

2011 – 2015

93 Total Accidents
51 Angle Accidents
3 Backing Accidents
0 Head On Accidents
4 Opposing Left Turn Accidents
22 Rear End Accidents
0 Rear to Rear Accidents
0 Sideswipe Opposite Direction
9 Sideswipe Same Direction
4 Single Vehicle Accidents



Relocate Signal at KY 44 & Hester

Option - C

**Move Signal
West**

**New
Connectors to
KY 44**

**Provides Option
to Adam
Shepherd, esp.
from Kroger**

**Major Benefits
– Ped Xing
across KY 44
- Driver Options**

Not Cheap





Next Steps

- Modify Options Based on Public Input
- Present to City Council
 - August 2016
- Finalize Traffic Study with Recommendations
 - September 2016

